

IN THE DISTRICT COURT OF THE FIFTH JUDICIAL DISTRICT OF THE
 STATE OF IDAHO, IN AND FOR THE COUNTY OF TWIN FALLS

In Re CSRBA) PARTIAL DECREE PURSUANT TO I.R.C.P. 54(b)
 Case No. 49576) FOR FEDERAL RESERVED
)
) WATER RIGHT NO. 94-09528I

NAME AND ADDRESS: UNITED STATES OF AMERICA ACTING THROUGH
 USDA FOREST SERVICE
 550 W FORT ST MSC 033
 BOISE ID 83724

SOURCE: See Attachment 1, Column A TRIBUTARY: See Attachment 1, Column B

Sources are located on National Forest System Land in the Leiberg Creek-Little North Fork Coeur d'Alene River subwatershed (HUC12 170103010603).

QUANTITY: The amount of water necessary to control and suppress forest fires.

PRIORITY DATE: 06/22/1944

POINT OF DIVERSION: See Attachment 1, Columns C through G

PURPOSE AND PERIOD OF USE:	<u>PURPOSE OF USE</u>	<u>PERIOD OF USE</u>
	Administrative-Fire Suppression	01/01 - 12/31

PLACE OF USE: National Forests in Idaho and the Kaniksu, Lolo and Kootenai National Forests in Montana.

See Attachment 2.

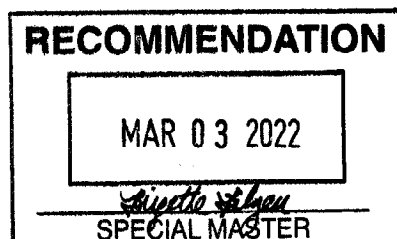
OTHER PROVISIONS NECESSARY FOR DEFINITION OR ADMINISTRATION OF THIS WATER RIGHT:

This right is limited to the intermittent diversion and use of water for the purpose of suppressing wildfires. This water right shall not be used as a basis to prevent the future appropriation of water.

This partial decree is subject to such general provisions necessary for the definition of the rights or for the efficient administration of the water rights as may be ultimately determined by the Court at a point in time no later than the entry of a final unified decree. Idaho Code § 42-1412(6).

RULE 54(b) CERTIFICATE

With respect to the issues determined by the above partial judgment it is hereby CERTIFIED, in accordance with Rule 54(b), I.R.C.P., that the court has determined that there is no just reason for delay of the entry of a final judgment and that the court has and does hereby direct that the above partial judgment is a final judgment upon which execution may issue and an appeal may be taken as provided by the Idaho Appellate Rules.



Eric J. Wildman
 Presiding Judge of the
 Coeur d'Alene-Spokane River Adjudication

Attachment 1






	A	B	C	D	E	F	G
1	SOURCE NAME	TO TRIBUTARY	TOWNSHIP	RANGE	SECTION	QQ	SURVEY CODE AND NUMBER
2	Lindberg Creek	Little North Fork Coeur d'Alene River	51N	01W	25	NESW	
3	Lindberg Creek	Little North Fork Coeur d'Alene River	51N	01W	25	NESW	MS 2605
4	Little North Fork Coeur d'Alene River	North Fork Coeur d'Alene River	51N	01W	25	NESW	
5	Little North Fork Coeur d'Alene River	North Fork Coeur d'Alene River	51N	01W	25	NESW	MS 2605
6	Unnamed Stream	Lindberg Creek	51N	01W	25	NESW	
7	Unnamed Stream	Lindberg Creek	51N	01W	25	NESW	MS 2605
8	Unnamed Stream	Little North Fork Coeur d'Alene River	51N	01W	25	NESW	
9	Unnamed Stream	Little North Fork Coeur d'Alene River	51N	01W	25	NWNE	
10	Lindberg Creek	Little North Fork Coeur d'Alene River	51N	01W	25	NWSE	
11	Little North Fork Coeur d'Alene River	North Fork Coeur d'Alene River	51N	01W	25	NWSE	
12	Lindberg Creek	Little North Fork Coeur d'Alene River	51N	01W	25	NWSW	
13	Lindberg Creek	Little North Fork Coeur d'Alene River	51N	01W	25	NWSW	MS 2605
14	Unnamed Stream	Lindberg Creek	51N	01W	25	NWSW	MS 2605
15	Unnamed Stream	Little North Fork Coeur d'Alene River	51N	01W	25	NWSW	MS 2605
16	Little North Fork Coeur d'Alene River	North Fork Coeur d'Alene River	51N	01W	25	SENW	
17	Unnamed Stream	Little North Fork Coeur d'Alene River	51N	01W	25	SENW	
18	Little North Fork Coeur d'Alene River	North Fork Coeur d'Alene River	51N	01W	25	SESE	
19	Unnamed Stream	Little North Fork Coeur d'Alene River	51N	01W	25	SESE	
20	Unnamed Stream	Little North Fork Coeur d'Alene River	51N	01W	25	SWNE	
21	Little North Fork Coeur d'Alene River	North Fork Coeur d'Alene River	51N	01W	25	SWSE	
22	Lindberg Creek	Little North Fork Coeur d'Alene River	51N	01W	25	SWSW	
23	Bootjack Creek	Little North Fork Coeur d'Alene River	51N	01W	26	NENE	
24	Little North Fork Coeur d'Alene River	North Fork Coeur d'Alene River	51N	01W	26	NENW	
25	Delaney Creek	Little North Fork Coeur d'Alene River	51N	01W	26	NESW	
26	Bootjack Creek	Little North Fork Coeur d'Alene River	51N	01W	26	NWNE	
27	Little North Fork Coeur d'Alene River	North Fork Coeur d'Alene River	51N	01W	26	NWNE	
28	Trestle Creek	Little North Fork Coeur d'Alene River	51N	01W	26	NWNE	
29	Little North Fork Coeur d'Alene River	North Fork Coeur d'Alene River	51N	01W	26	NWNW	
30	Little North Fork Coeur d'Alene River	North Fork Coeur d'Alene River	51N	01W	26	SENE	

Attachment 1

	A	B	C	D	E	F	G
1	SOURCE NAME	TO TRIBUTARY	TOWNSHIP	RANGE	SECTION	QQ	SURVEY CODE AND NUMBER
31	Little North Fork Coeur d'Alene River	North Fork Coeur d'Alene River	51N	01W	26	SENE	MS 2605
32	Delaney Creek	Little North Fork Coeur d'Alene River	51N	01W	26	SENE	
33	Delaney Creek	Little North Fork Coeur d'Alene River	51N	01W	26	SENE	
34	Delaney Creek	Little North Fork Coeur d'Alene River	51N	01W	26	SENE	
35	Little North Fork Coeur d'Alene River	North Fork Coeur d'Alene River	51N	01W	26	SENE	
36	Lavoie Creek	Little North Fork Coeur d'Alene River	51N	01W	27		
37	Little North Fork Coeur d'Alene River	North Fork Coeur d'Alene River	51N	01W	27		

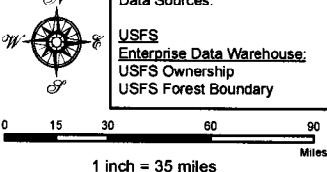
Attachment 2
Place of Use Map Fire Suppression - Water Right No. 94-095281
National Forests in Idaho and the Kaniksu, Lolo and Kootenai NF in Montana

Key to Features

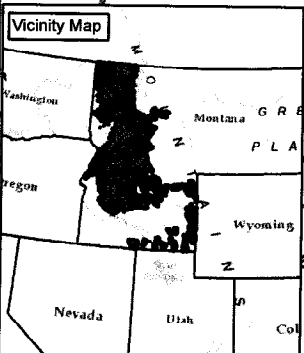
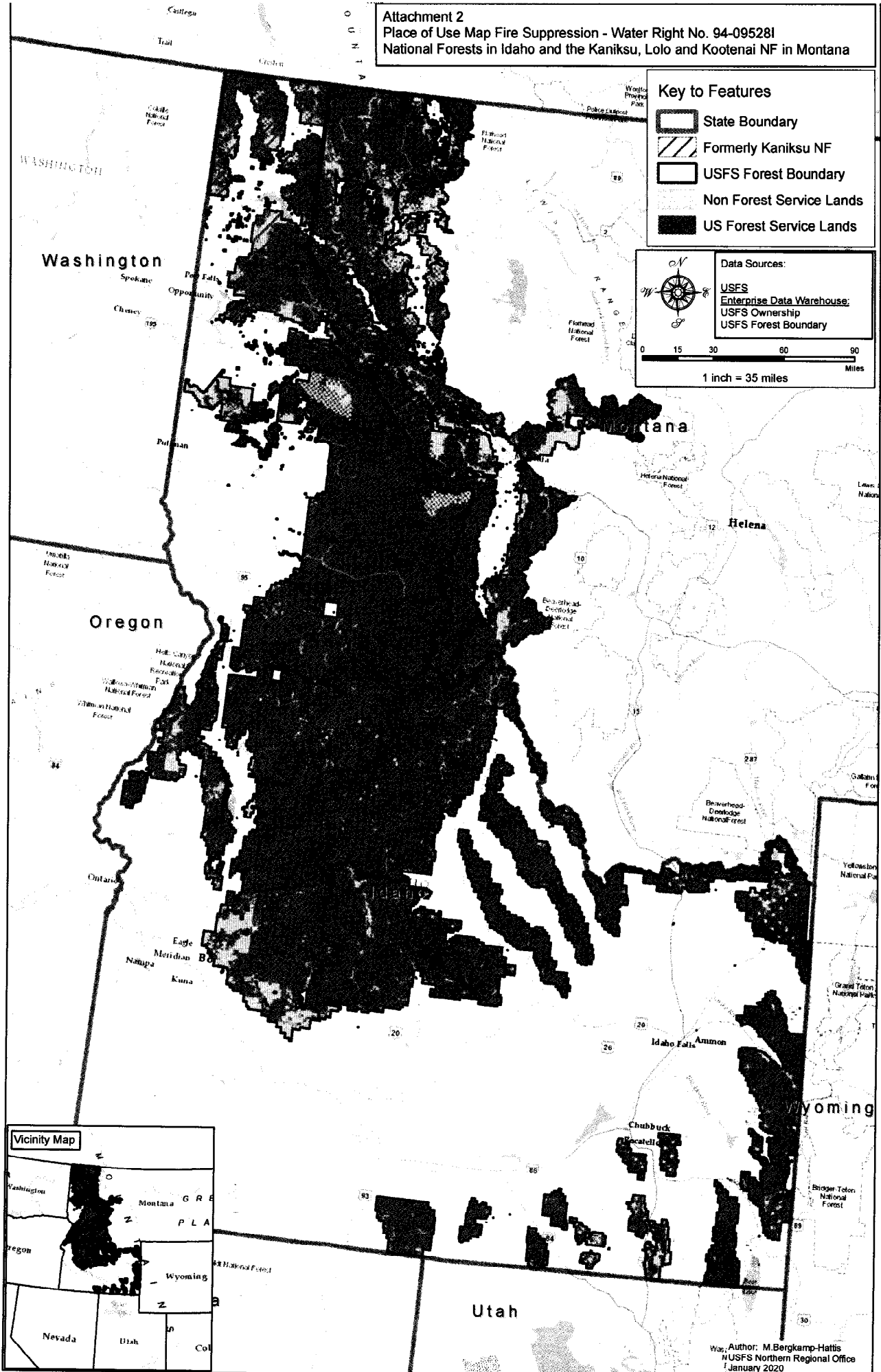
-  State Boundary
-  Formerly Kaniksu NF
-  USFS Forest Boundary
-  Non Forest Service Lands
-  US Forest Service Lands

Data Sources:

- USFS
- Enterprise Data Warehouse;
- USFS Ownership
- USFS Forest Boundary



0 15 30 60 90 Miles
 1 inch = 35 miles



Map Author: M. Bergkamp-Hattis
 NUSFS Northern Regional Office
 January 2020